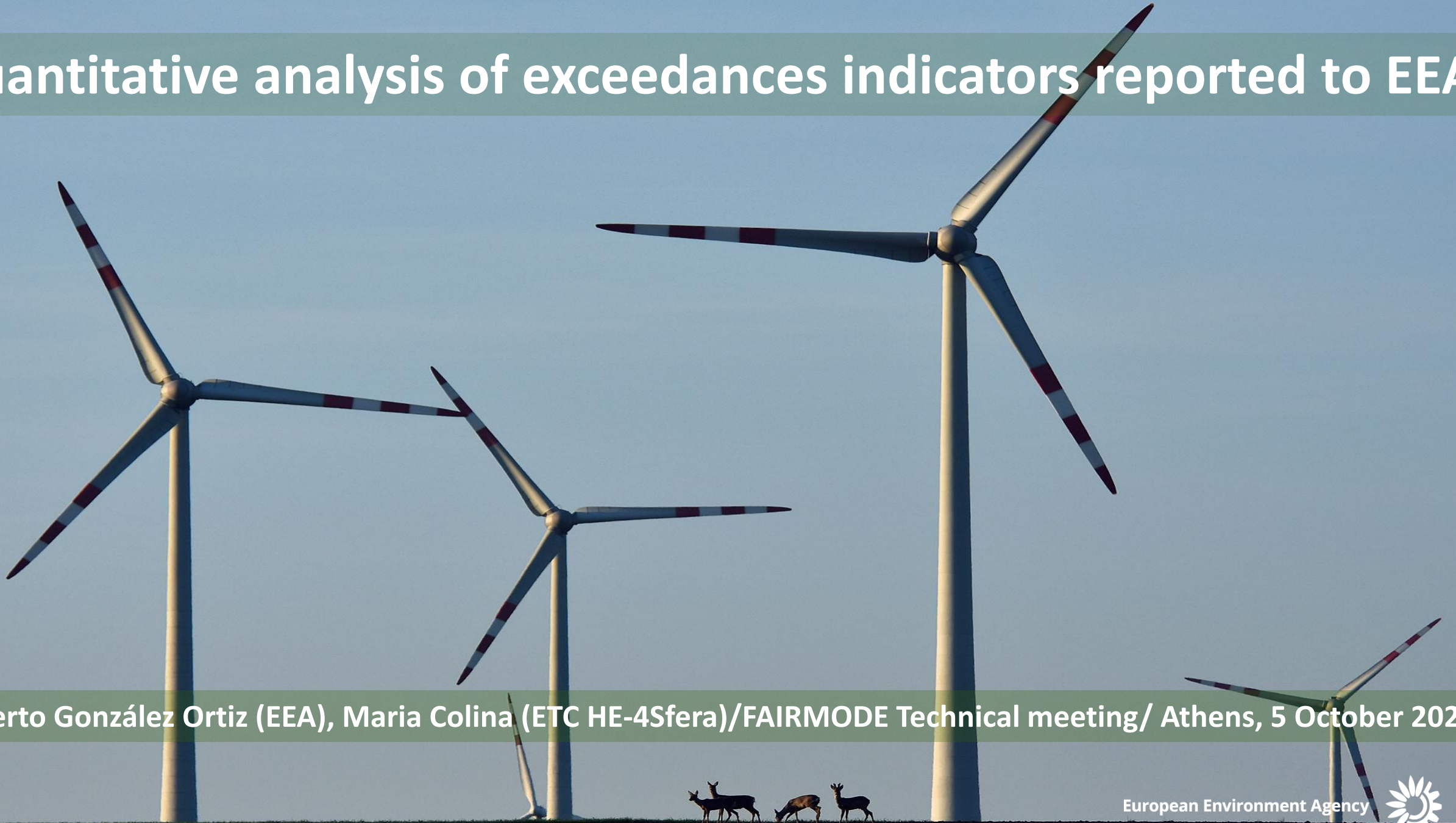


Quantitative analysis of exceedances indicators reported to EEA



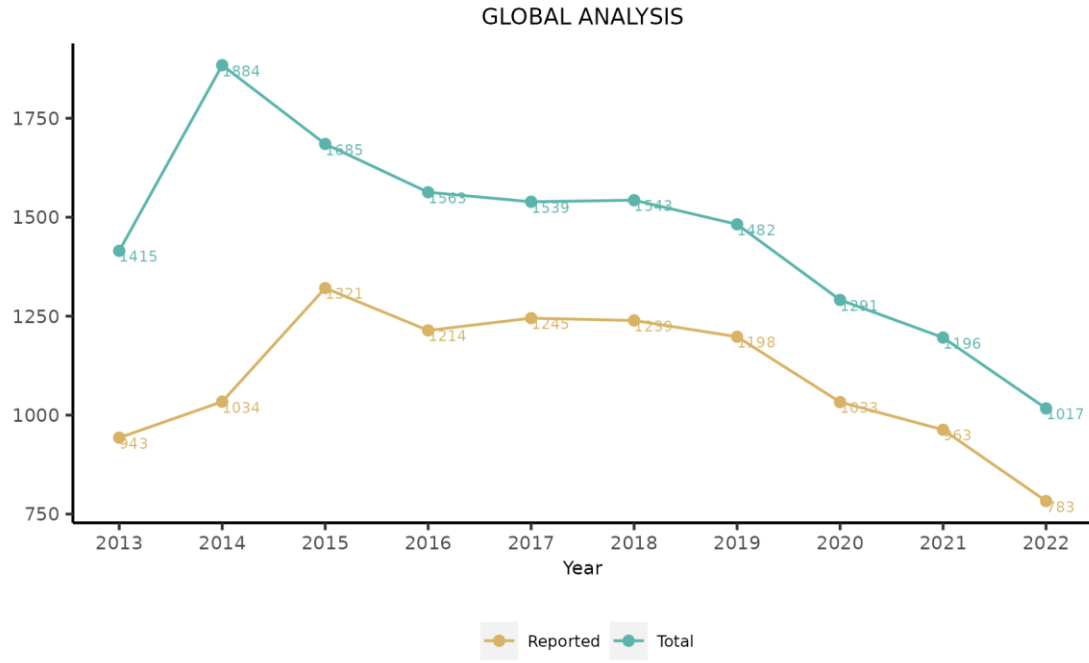
© Istvan Kerekes / Sustainable Yours / EEA

Alberto González Ortiz (EEA), Maria Colina (ETC HE-4Sfera)/FAIRMODE Technical meeting/ Athens, 5 October 2023

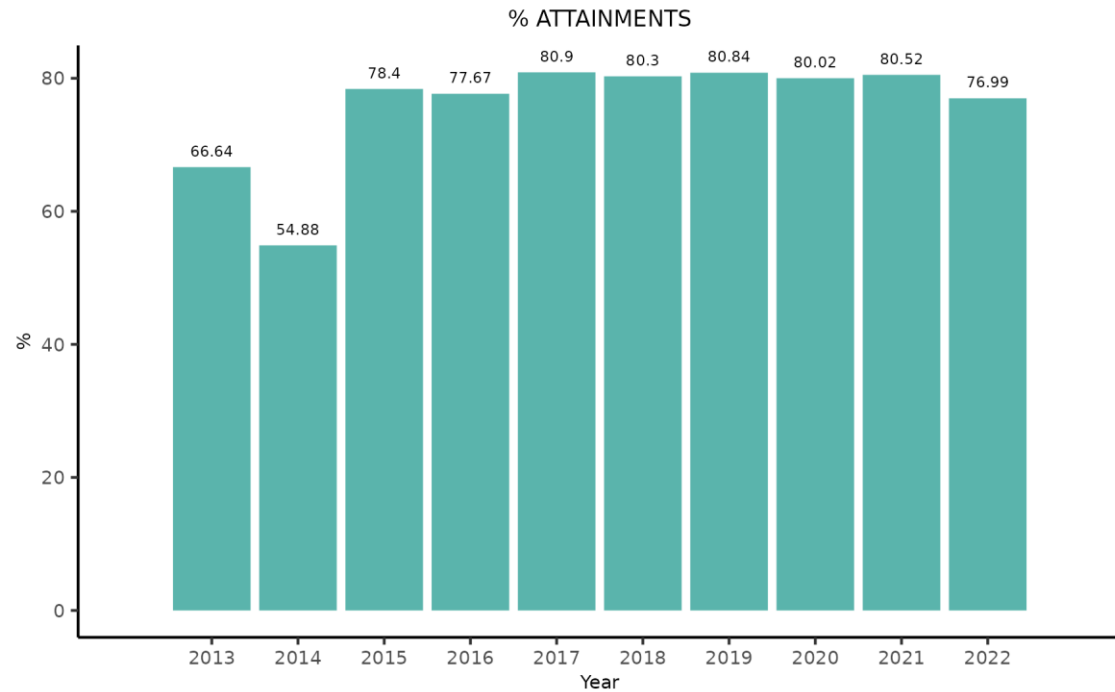
European Environment Agency



All exceedance indicators

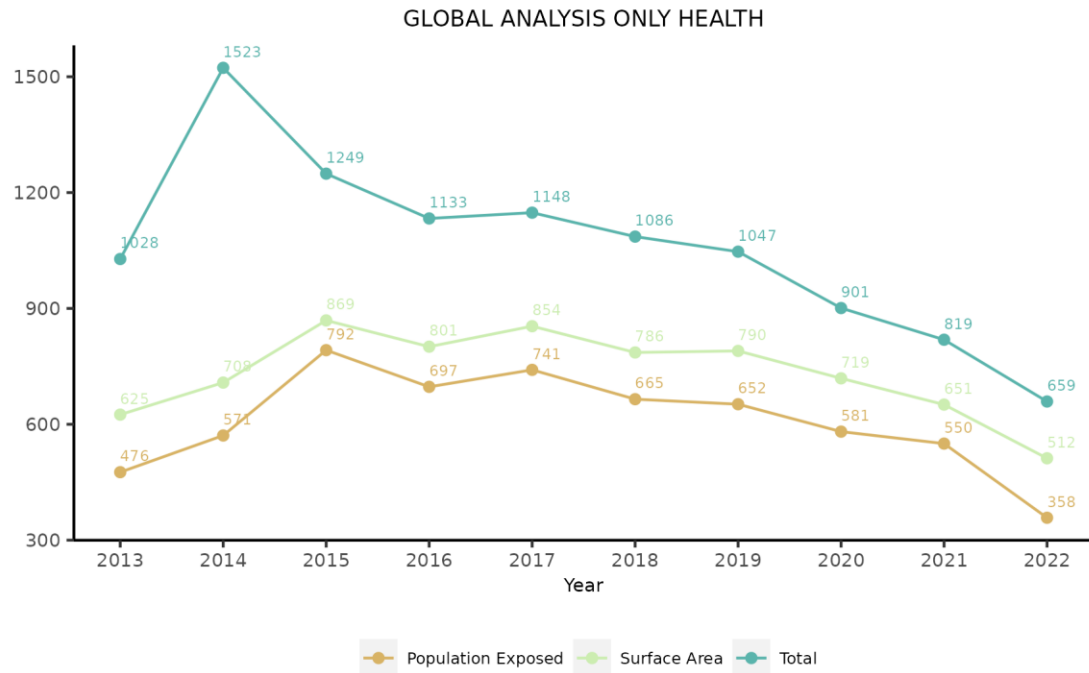


Total: is the total number of reported attainments filtered as final and true, while Reported means the total number of reported attainments with at least one completed field of Surface Area, Road Length, Population or Ecosystem Area exposed

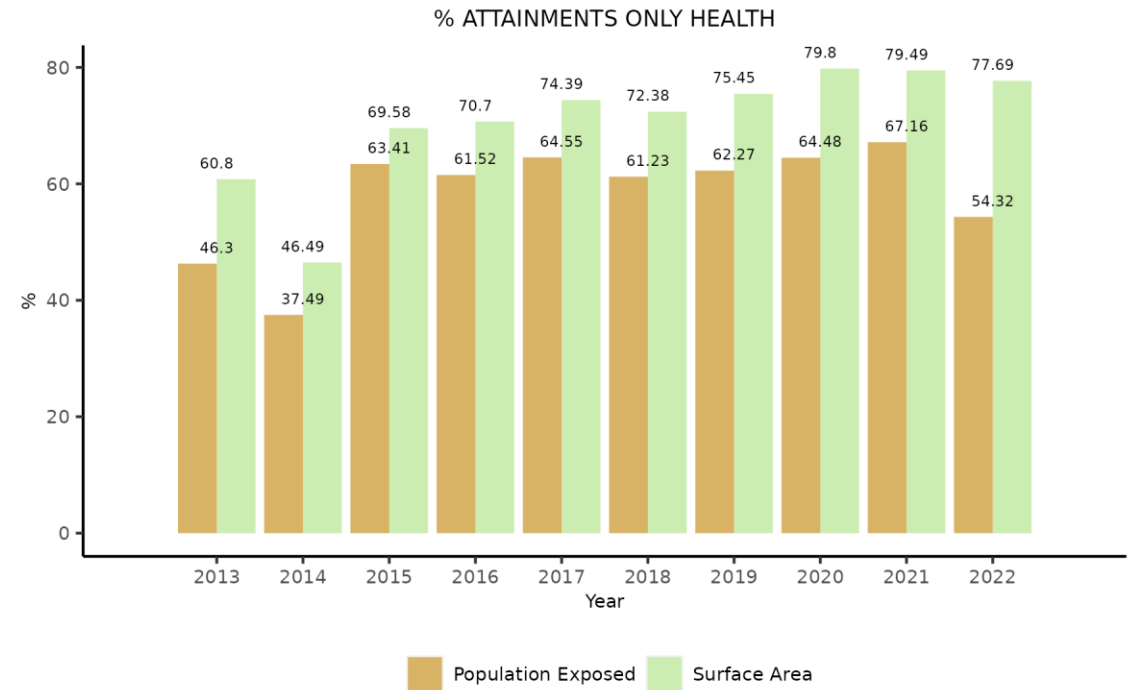


% of reported attainments with at least one completed field of Surface Area, Road Length, Population or Ecosystem Area exposed

Health indicators: affected area and population

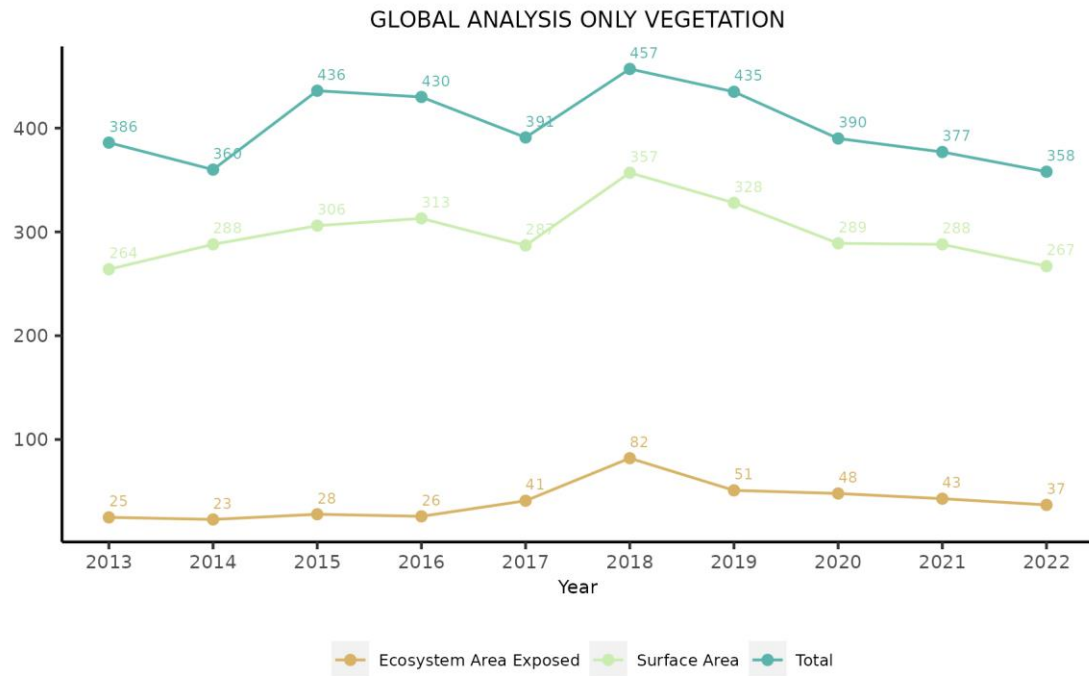


Total: is the total number of reported attainments with objective type health, while Population Exposed and Surface Area refer to those Attainments with values in these respective fields

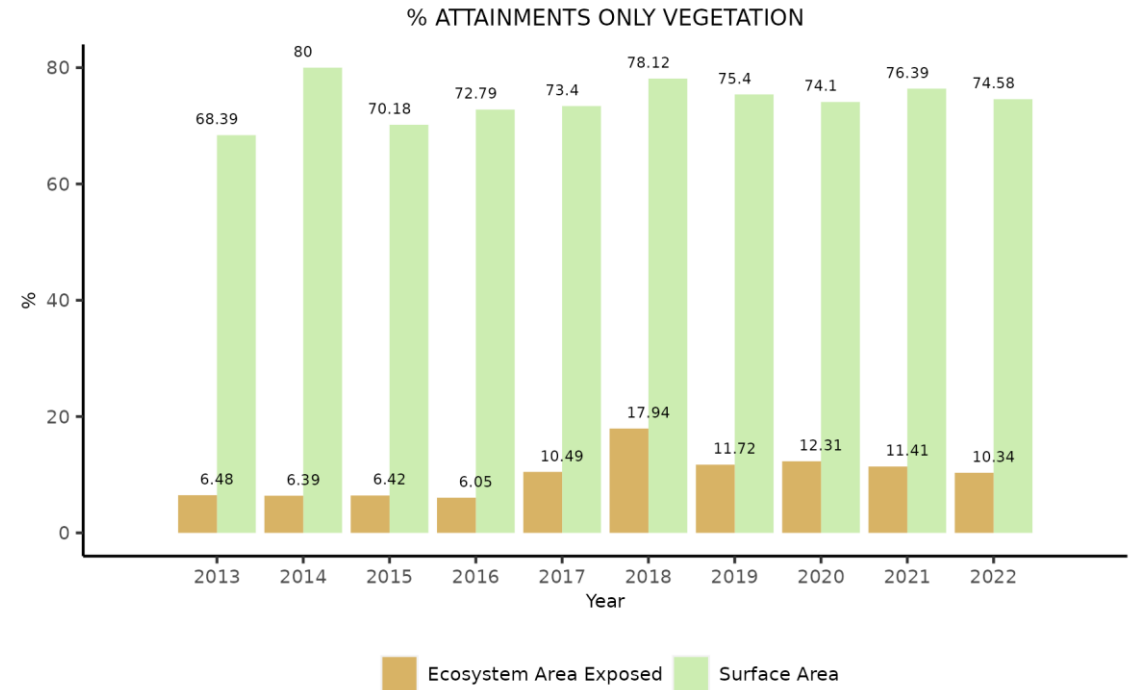


% Attainments with objective Type Health with Population Exposed or Surface Area reported

Vegetation: affected area and ecosystem area

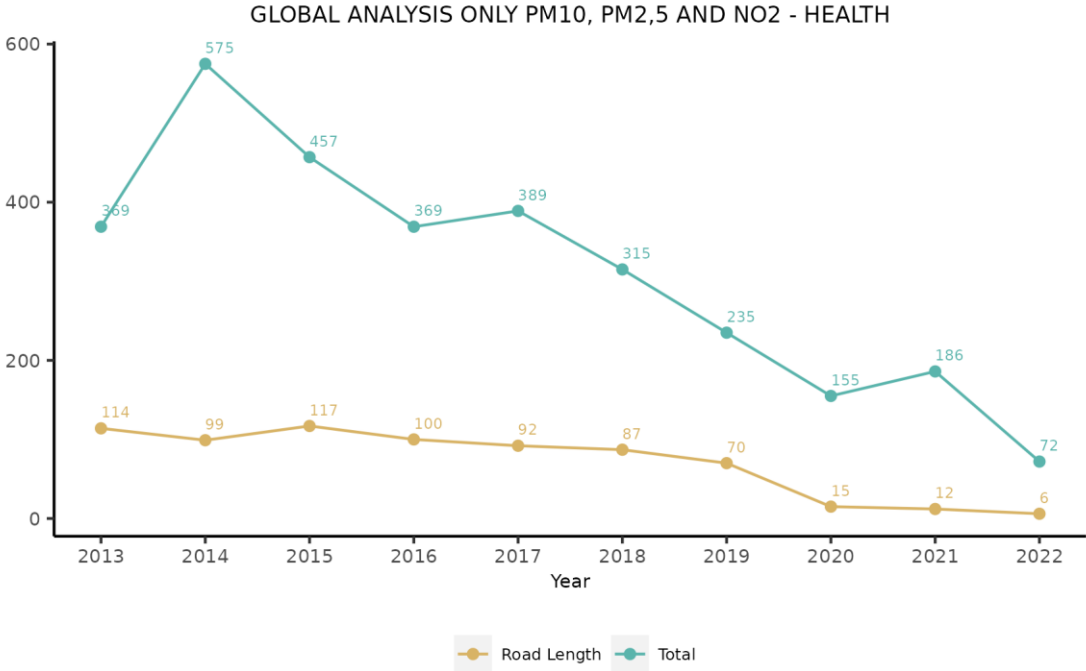


Total: is the total number of reported attainments with objective type Vegetation, while Ecosystem Area Exposed and Surface Area refer to those attainments with values in these respective fields

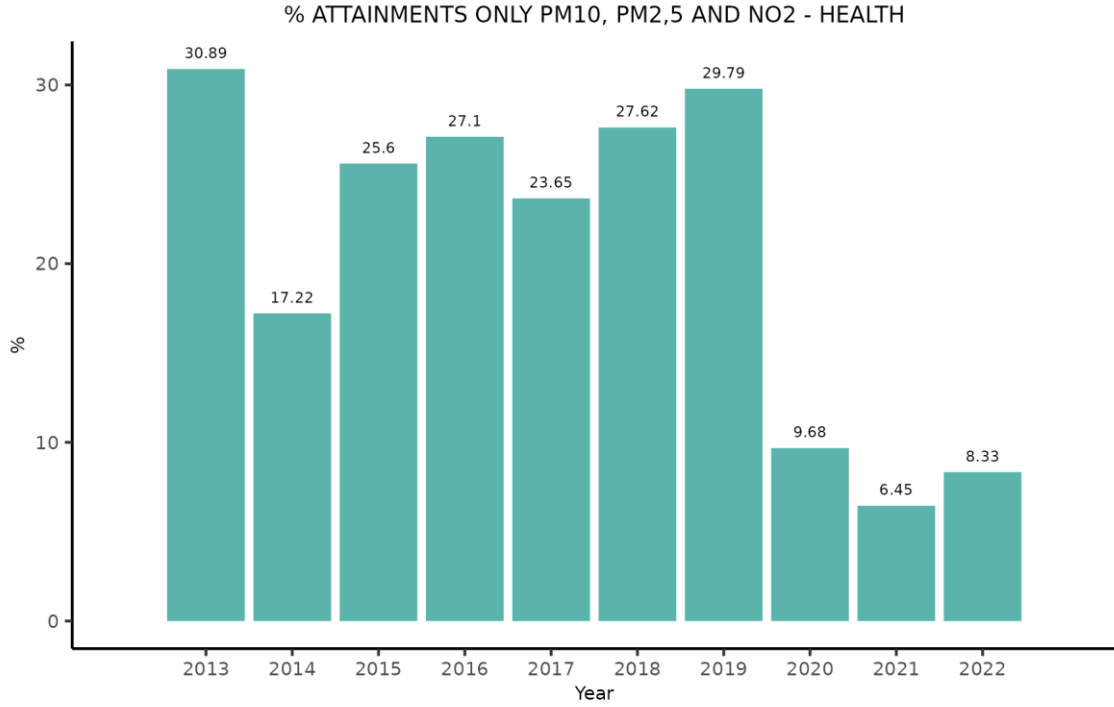


% Attainments with objective Type Vegetation with Ecosystem Area Exposed or Surface Area reported

Traffic indicator: road length



Total: is the total number of reported attainments only for PM10, PM2,5, NO2 and objective type health, while Road Length refers to those attainments with values in this field



% Attainments for PM10, PM2,5, NO2 and objective type health, with Road Length reported

Conclusions

- Quantitative analysis, not qualitative.
- Highest number of reported elements for surface, then exposure and then road length.
- Constant situation since 2015, except for length road, with decreasing percentage of exceedance situations providing that information
- From previous analysis we know that the reported information is not comparable in most of the cases
- Some countries have never reported any exceedance indicator

Thank you for your attention!

Alberto González Ortiz
Alberto.GonzalezOrtiz@eea.europa.eu

